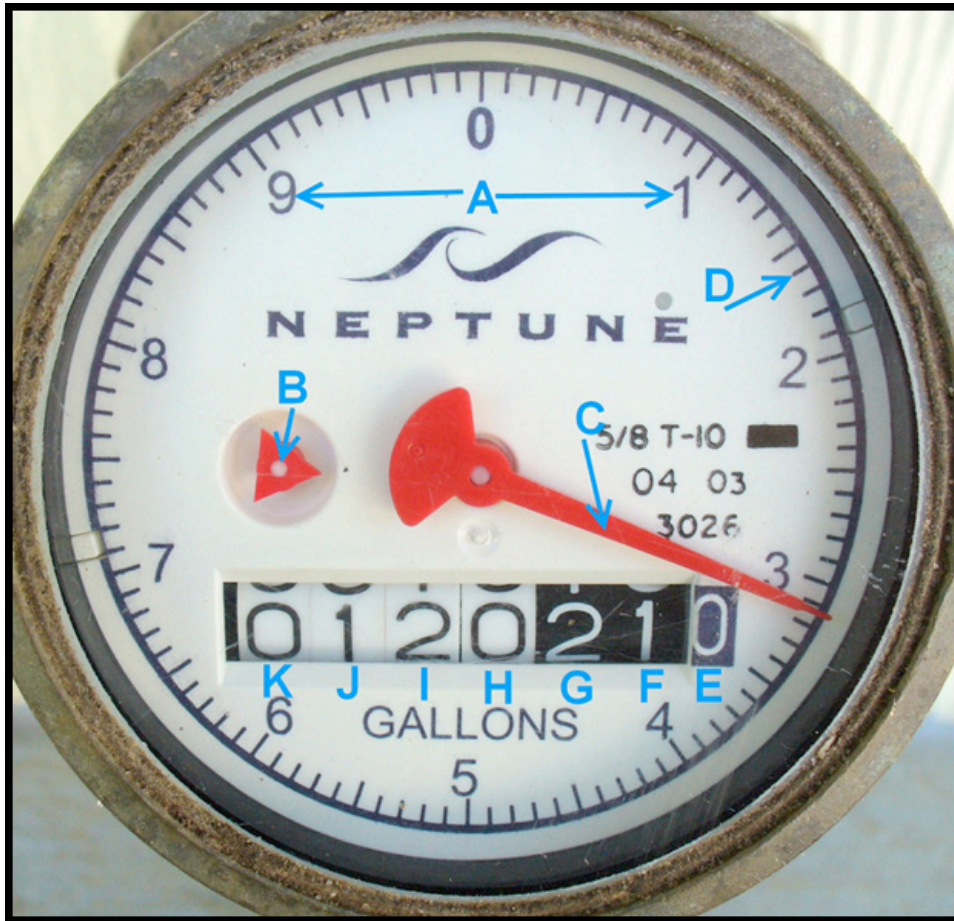


HOW TO READ YOUR WATER METER



LEGEND:

- **A – One gallon marks** – When the hand moves from one number to the next, one gallon has passed through the meter. When the hand goes completely around the face, ten gallons have passed through the meter.
- **B – Leak indicator** – This triangle will spin as water moves through the meter; even at very low flows.
- **C – Hand** – This pointer moves in a clockwise direction as water passes through the meter.
- **D – One-tenth gallon marks** – Each of these small marks indicates one-tenth of a gallon.
- **E – Stationary one gallon place** – This zero does not change. Its value is represented by the position of the hand.
- **F – Ten gallon place** – Each increase in this digit represents ten gallons.
- **G – Hundred gallon place** - Each increase in this digit represents one hundred gallons.
- **H – Thousand gallon place** - Each increase in this digit represents one thousand gallons.
- **I – Ten thousand gallon place** - Each increase in this digit represents ten thousand gallons.
- **J – One hundred thousand gallon place** - Each increase in this digit represents one hundred thousand gallons.

- **K – One million gallon place** - Each increase in this digit represents one million gallons.

ABOUT THE METER READING:

- The reading on your water meter is cumulative; that is, the numbers continue to increase and do not reset to zero each month. It is very similar to the odometer on your car. To determine the amount of water used during a given period, subtract the old reading from the new reading.
- The triangular shaped leak indicator spins when even a very small quantity of water moves through the meter.
- The Water District does not read all the numbers each month in order to calculate the water bill. We only read to the thousands place since the price per thousand gallons is relatively low. For that reason, the District's meter readers do not have to clean the entire face of the register to obtain a reading. They merely clean the area of the odometer type numbers that will be recorded in the meter reading device.
- Using the LEGEND as a guide, you can see that the meter in the photograph indicates a full reading of 0120213.1 or 120, 213.1 gallons. This is the total number of gallons that have passed through the meter since it was installed. On your water bill, this reading would show up as 120.0 since we only read to the thousands place for billing purposes.
- To use the meter to help determine if you have a leak, it is necessary to read all the numbers including those represented by the hand. This gives a very accurate reading that can show a change over a relatively short period of time.
- Since the meter requires the passage of water to turn the dial and the numbers, it cannot indicate an increase in gallons registered unless water passes through it. There are no batteries or springs to make it turn. As a meter ages, it will slow down; that is, it will register less water than actually goes through it. Generally, the Water District will replace residential meters after one million gallons of water have been registered. Of course, if the meter stops registering or is obviously malfunctioning, it will be replaced sooner.